

## **Drug related statistics 2021**

### **Introduction**

The main objective of this report is to provide current information for the effectiveness of programme planning, monitoring and evaluations.

#### **Specific Objectives are as follows,**

1. To determine the incidence, prevalence and characteristics of drug users.
2. To monitor the trends and patterns in drug use and drug related arrests.

The Research Division gratefully acknowledges the generous contributions of the following

Dr.Piyanjie Amarabandu, Chairman, NDDCB for the leadership and guidance,

Ms.Asha Jayawardhana, Director General –, NDDCB for the guidance and generous contributions,

Director, Police Narcotic Bureau and IT Division of the Police Narcotic Bureau for providing of annual arrests statistics,

and

Staff of the Research Division for their technical support.

## Drug Related Arrests

### Drug Related Arrests by Drug

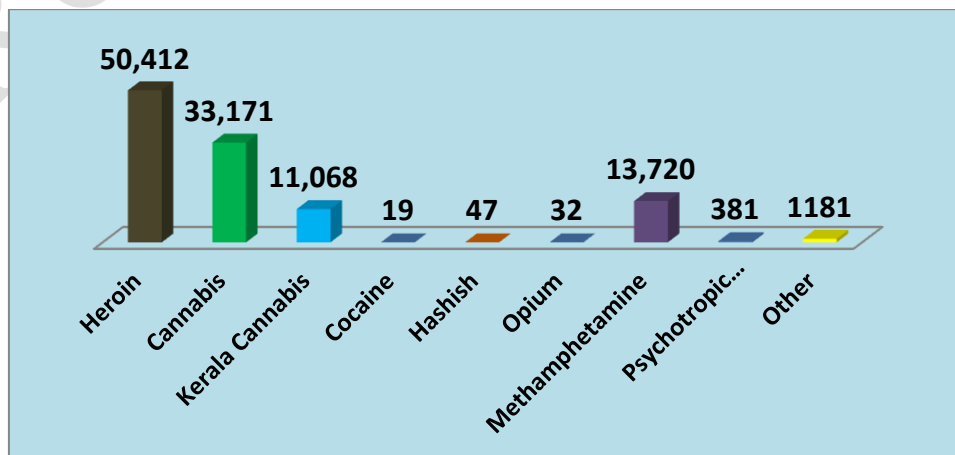
The total number of persons of drug related arrests was 110,031 in year 2021. Of the drug-related arrests 50,412 (46%) offenders were for heroin, 33,171 (30%) for cannabis and 11,068 (10) for Kerala Cannabis. 381 persons for Psychotropic substances, 19 persons for cocaine and 47 persons for hashish were arrested in year 2021. Total number of drug related arrests had been increased by 2%, compared to the year 2020.

**Table 1- Drug Related Arrests by Drug**

Type of drugs	Frequency	%
Heroin	50,412	46
Cannabis	33,171	30
Kerala Cannabis	11,068	10
Cocaine	19	0.01
Hashish	47	0.04
Opium	32	0.03
Methamphetamine	13,720	12
Psychotropic substances	381	0.3
Other	1181	1
Total	110,031	100

Source: Police Narcotics Bureau

**Graph No: 01 - Drug Related Arrest by Drug**



Source: Police Narcotics Bureau

## Drug Related Arrests by District

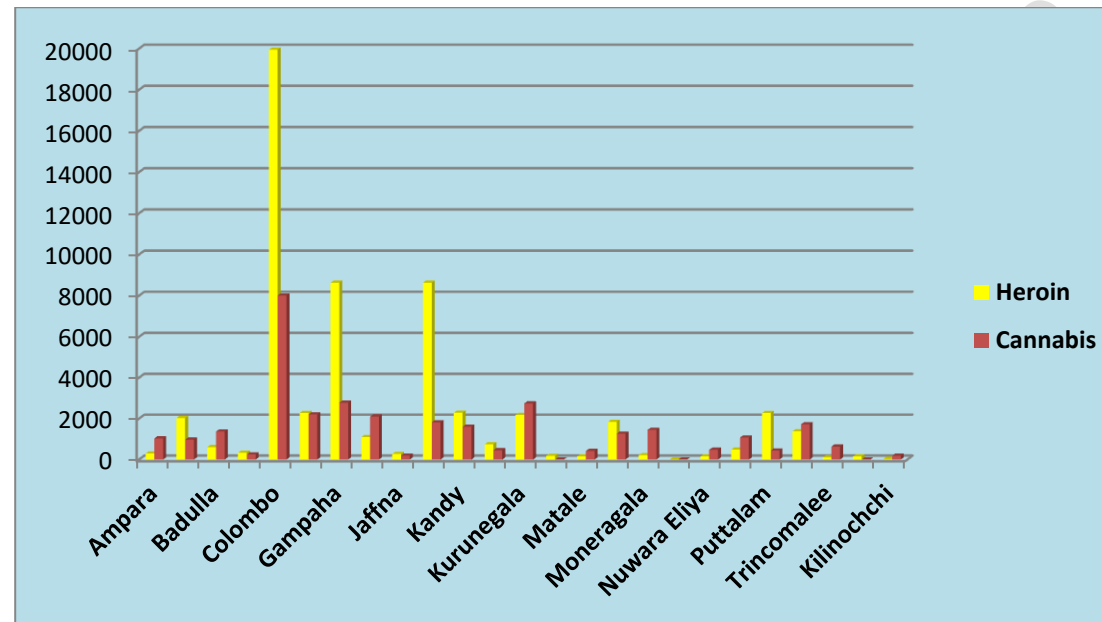
Colombo district reported 36% of the total drug related arrests followed by 12% from Gampaha district and 10% from Kurunegala district. Galle district reported the highest rate 4.2% of drug related arrests from Southern province.

**Table 2 - Drug Related Arrest by District**

District	Heroin	%	Cannabis	%	Kerala Cannabis	%	cocaine	%	hashish	%	Methamphetamine	%	Phychotropic Substances	%	Opium	%	Others	%	Total	%
<b>Ampara</b>	294	0.5%	1033	3.1%	374	3.3%	0	0%	0	0%	26	0.1%	05	1.4%	0	0%	20	1.4%	<b>1752</b>	2%
<b>Anuradapura</b>	2030	3.6%	972	3.0%	625	5.6%	0	0%	0	0%	40	0.2%	35	10.2%	0	0%	19	1.3%	<b>3721</b>	3.3%
<b>Badulla</b>	606	1.0%	1367	4.1%	15	0.1%	0	0%	0	0%	30	0.2%	12	4%	1	3.1%	43	3%	<b>2074</b>	2%
<b>Batticaloa</b>	332	0.5%	245	0.7%	2	0.01%	0	0%	0	0%	110	0.8%	06	2%	0	1%	02	0.1%	<b>697</b>	0.6%
<b>Colombo</b>	19944	35.5%	8007	24.1%	5386	49%	12	63%	29	62%	10004	73%	112	33%	19	59.3%	427	31%	<b>39090</b>	36%
<b>Galle</b>	2276	4.0%	2203	6.6%	2	0.01%	0	0%	1	2%	123	0.8%	1	0.2%	0	0%	30	0.9%	<b>4636</b>	4.2%
<b>Gampaha</b>	8632	15%	2777	8.3%	430	4.0%	0	0%	3	6%	1464	11%	21	6.1%	04	13%	117	8.3%	<b>13443</b>	12.2%
<b>Hambantota</b>	1097	2.0%	2103	6.3%	428	4.0%	0	0%	1	2%	127	0.9%	05	1.4%	0	0%	33	2.3%	<b>3794</b>	3.4%
<b>Jaffna</b>	273	0.4%	188	0.5%	3	0.02%	0	0%	0	0%	2	0.01%	01	0.2%	0	0%	41	3%	<b>508</b>	0.4%
<b>Kalutara</b>	8632	15%	1818	5.4%	140	1.2%	0	0%	3	6%	375	3%	63	18.4%	0	0%	105	7.5%	<b>11136</b>	10%

														%						
<b>Kandy</b>	2286	4.0%	1605	5.0%	182	2.0%	0	0%	1	2%	117	0.8%	39	11.4%	2	6.2%	156	11.1%	<b>4386</b>	4%
<b>Kegalle</b>	744	1.3%	454	1.3%	10	0.09%	0	0%	0	0%	43	0.3%	0	0%	0	0%	03	0.2%	<b>1254</b>	1.1%
<b>Kurunegala</b>	2179	4.0%	2741	8.2%	126	1.1%	0	0%	0	0%	77	0.5%	16	5%	2	6.2%	87	6.2%	<b>5226</b>	5%
<b>Mannar</b>	176	0.3%	0	00%	543	5.0%	0	0%	1	2%	104	0.7%	01	0.2%	0	0%	20	1.4%	<b>845</b>	8%
<b>Matale</b>	153	0.2%	420	1.2%	0	0%	0	0%	3	6%	22	0.1%	01	0.2%	0	0%	51	4.2%	<b>650</b>	0.5%
<b>Matara</b>	1841	3.2%	1262	4.0%	816	7.3%	6	32%	0	0%	205	1.5%	03	0.8%	2	6.2%	106	8%	<b>4239</b>	4%
<b>Moneragala</b>	211	0.3%	1448	4.3%	0	0%	0	0%	0	0%	35	0.2%	01	0.2%	0	0%	16	1.1%	<b>1711</b>	2%
<b>Mullativu</b>	0	0%	1	0.003%	0	0%	0	0%	0	0%	0	0%	0	0%	0	0%	0	0%	<b>1</b>	0.00%
<b>Nuwara Eliya</b>	153	0.2%	476	1.4%	8	0.07%	0	0%	1	2%	12	0.08%	02	0.6%	2	6.2%	38	2.7%	<b>690</b>	0.6%
<b>Polonnaruwa</b>	485	0.8%	1074	3.2%	250	2.2%	0	0%	0	0%	56	0.4%	06	2%	0	0%	10	0.7%	<b>1881</b>	2%
<b>Puttalam</b>	2275	4.0%	439	1.3%	1033	9.3%	1	5%	4	9%	561	4%	03	0.8%	0	0%	16	1.1%	<b>4332</b>	4%
<b>Ratnapura</b>	1378	2.4%	1724	51%	117	1.6%	0	0%	0	0%	175	1.2%	41	12%	0	0%	29	2%	<b>3464</b>	3.1%
<b>Trincomalee</b>	105	0.1%	633	2.0%	0	0%	0	0%	0	0%	3	0.02%	05	1.4%	0	0%	19	1.3%	<b>765</b>	0.6%
<b>Vavuniya</b>	151	0.2%	0	00%	572	5.1%	0	0%	0	0%	8	0.05%	02	0.6%	0	0%	06	0.4%	<b>739</b>	0.6%
<b>Kilinochchi</b>	29	0.05%	181	0.5%	6	0.05%	0	0%	0	0%	2	0.01%	0	0%	0	0%	01	0.07%	<b>219</b>	0.1%
<b>Total</b>	<b>50,412</b>	100	<b>33,171</b>	100	<b>11,068</b>	100	<b>19</b>	100	<b>47</b>	100	<b>13,720</b>	100	<b>381</b>	100	<b>32</b>	100	<b>1181</b>	100	<b>110,031</b>	100

Source: Police Narcotics Bureau

**Graph No: 02 - Drug Related Arrest by District**

Source: Police Narcotics Bureau

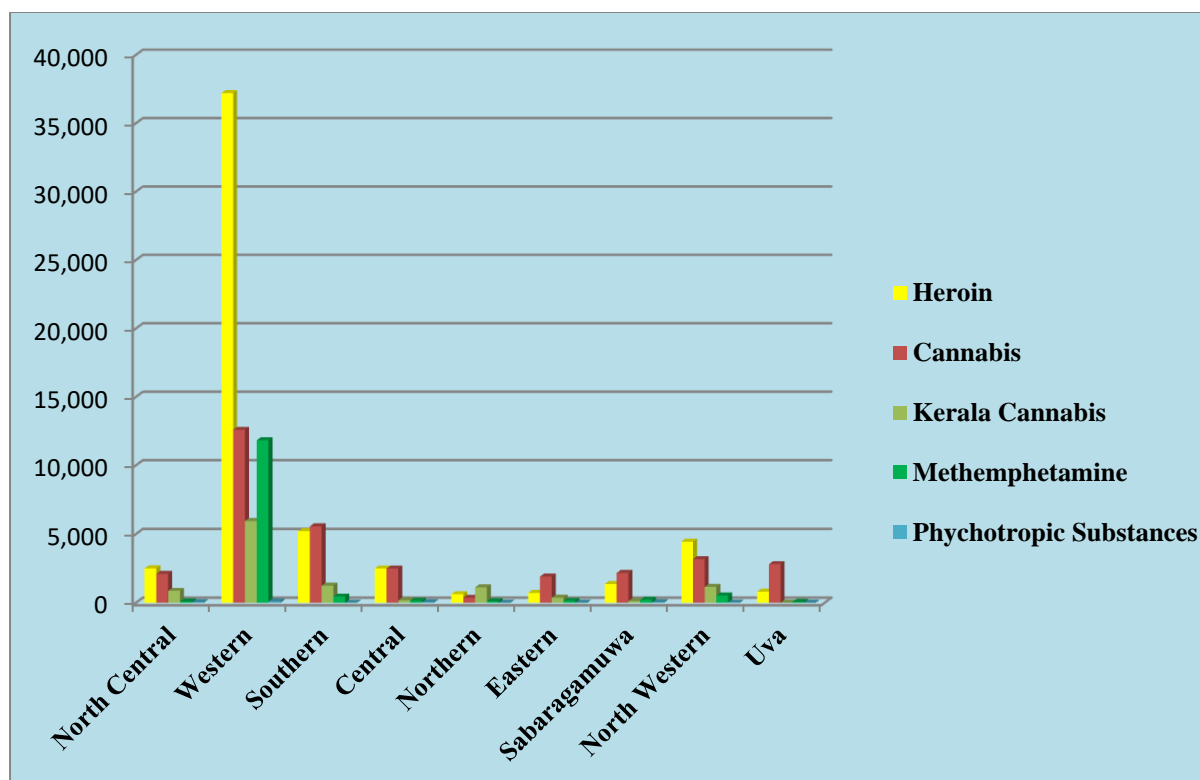
### Drug Related Arrests by Province

Majority of the drug related arrests, (62 %), was reported from the Western province followed by the Southern (11%) and the Central province (5 %). Lowest rate (2.1%) of drug related arrest was reported from the Northern Province.

**Table 3 - Drug Related Arrest by Province**

Province	Heroin	%	Cannabis	%	Kerala Cannabis	%	Cocaine	%	Hashish	%	Methamphetamine	%	Psychotropic Substances	%	Opium	%	Others	%	Total	%
North Central	2,515	5%	2107	6.3%	875	7.9%	0	0%	0	0%	96	0.6%	41	11%	0	0%	29	2.4%	5663	5.1%
Western	37,208	73%	12,602	38%	5956	54%	12	63%	35	74%	11843	86%	96	25%	23	72%	435	37%	68210	62%
Southern	5,214	10%	5,568	1.7%	1248	11%	6	31.5%	2	4.2%	455	3.3%	9	2.3%	2	6.2%	169	14.3%	12673	11.%
Central	2,499	5%	2,501	0.6%	190	1.7%	0	0%	5	11%	151	1.1%	42	11%	4	13%	245	21%	5637	5.1%
Northern	629	1.2%	370	1.1%	1124	10%	0	0%	1	2.1%	116	0.8%	4	1%	0	0%	68	6%	2312	2.1%
Eastern	731	1.4%	1,911	5.8%	376	3.3%	0	%	0	0%	139	1%	16	4.1%	0	0%	41	3.4%	3214	3%
Sabaraga muwa	1,378	3%	2,178	6.6%	127	1.1%	0	0%	0	0%	218	1.6%	41	11%	0	0%	32	3%	3974	4%
North Western	4,454	9%	3,180	9.6%	1159	10%	1	5.2%	4	8.5%	534	4%	19	5%	2	6.2%	103	9%	9456	9%
Uva	817	1.6%	2,815	8.5%	15	0.1%	0	0%	0	0%	65	0.4%	13	3.4%	1	3.1%	59	5%	3785	3.4%
<b>Total</b>	<b>50,412</b>	<b>100</b>	<b>33,171</b>	<b>100</b>	<b>11,068</b>	<b>100</b>	<b>19</b>	<b>100</b>	<b>47</b>	<b>100</b>	<b>13720</b>	<b>100</b>	<b>381</b>	<b>100</b>	<b>32</b>	<b>100</b>	<b>1181</b>	<b>100</b>	<b>110,031</b>	<b>100</b>

**Source: Police Narcotics Bureau**

**Graph No: 03 Drug Related Arrest by Province**

Source: Police Narcotics Bureau

**Seized Quantity of Drugs (Kg)**

The total quantity of heroin seized Island-wide was 1630.103 kg and quantity of the cannabis seized Island-wide was 10107.001 kg in addition 377.293 kg of Methamphetamine was seized in 2021.

**Table 4- Seized Quantity of Drug (Kg)**

Drug	Seized quantity (kg)
Heroin	1630.103
Cannabis	10107.001
Kerala Cannabis	5521.193
Cocaine	10.303
Hashish	93.884
Opium	365
Methamphetamine	377.293
Psychotropic substances	332
Others	61.956

Source: Police Narcotics Bureau

## Treatment Admissions

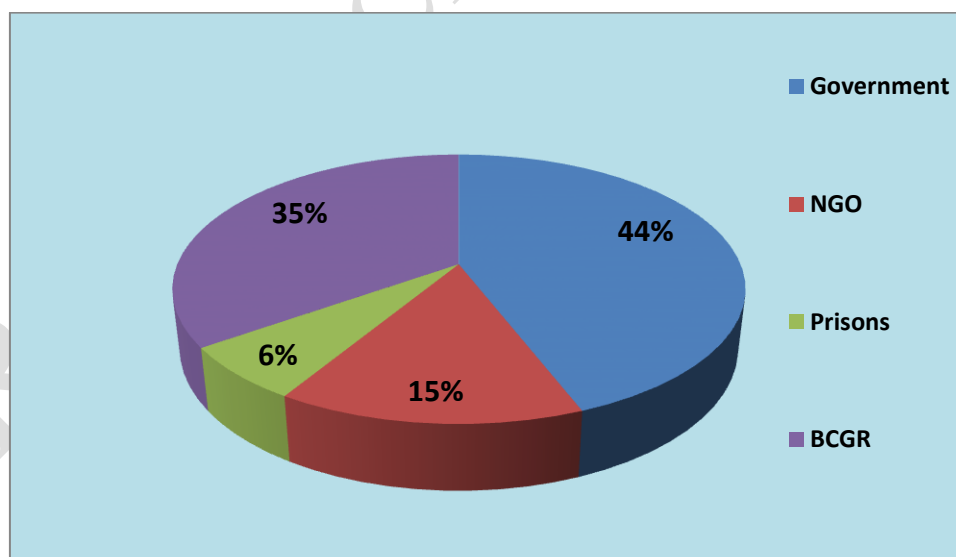
The government and non-government organizations were involved in drug treatment services in Sri Lanka. The reported number of persons received treatment for drug dependence Island wide was 1703 in year 2021. Among them 751 (44%) was reported from the treatment centers of the National Dangerous Drugs Control Board and 111 (07%) from the Prisoner Drug Rehabilitation Programme of the Department of Prisons. 249 (15%) was reported from the NGO or private treatment facilities. 592 (35%) was reported from the Kandakadu treatment and rehabilitation center of Bureau of the Commissioner General of Rehabilitation.

**Table 05 - Reported Drug Users by Treatment Facility for 2021**

Facility	Government	NGO	Prisons	Kandakadu	Total
Number of treatment received persons	751	249	111	592	1703
Percentage %	44	15	07	35	100.0

Source: DAMS Treatment Data: 2021, NDDCB

**Graph No: 04 - Reported Drug Users by Treatment Facility**



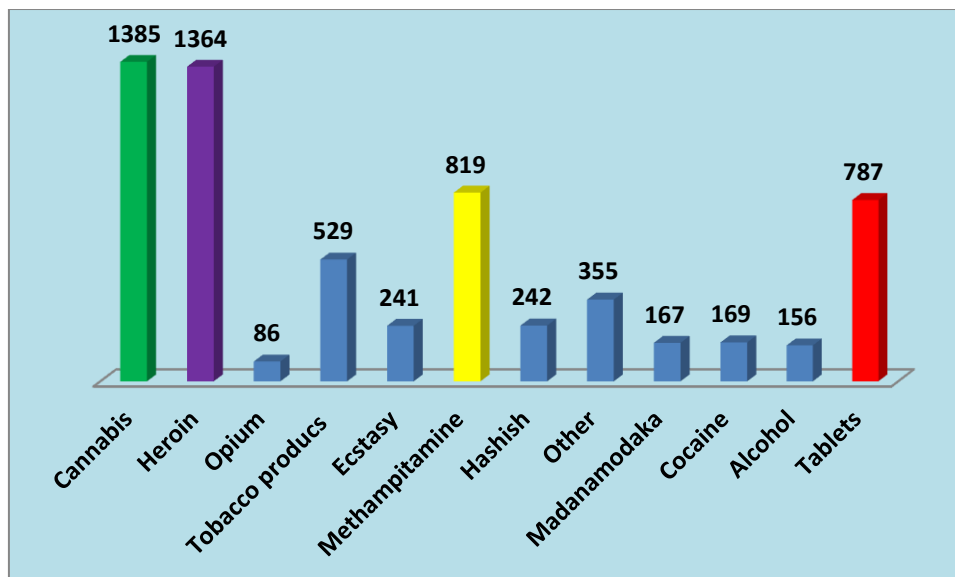
Source: DAMS Treatment Data: 2021, NDDCB



### Treatment Admissions by Drug

Data indicates that most of the treatment received clients were multiple drug users. 276 used tobacco, 1,364 used heroin and 1,385 used cannabis. Alcohol, tablets and opium users are as follows, 156, 879 and 86.

**Graph No: 05 - Treatment Admissions by Drug**

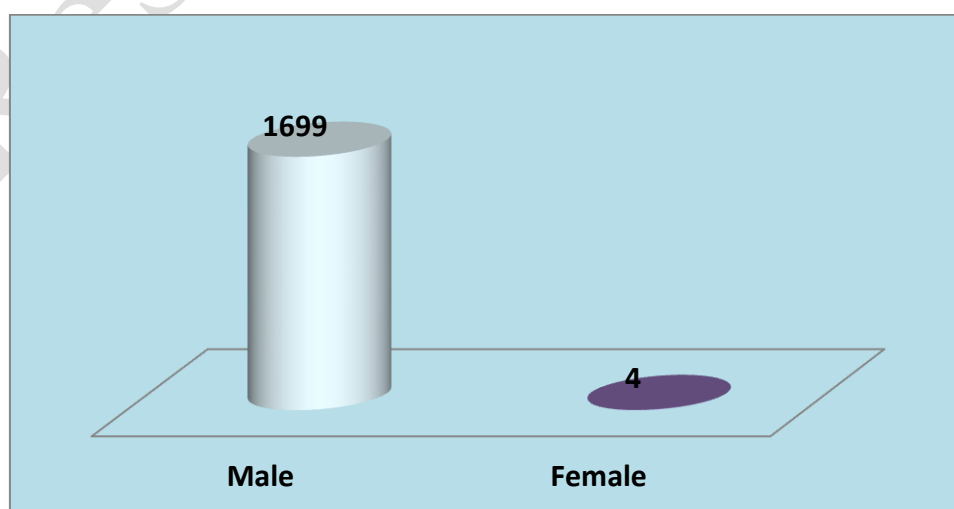


Source: DAMS Treatment Data: 2021, NDDCB

### Treatment Admissions by Gender

Out of the total treatment admissions of the year of 2021, 99.8% (1,699) were males. 04 (0.2%) female drug users reported.

**Graph No: 06 - Treatment Admissions by Gender**

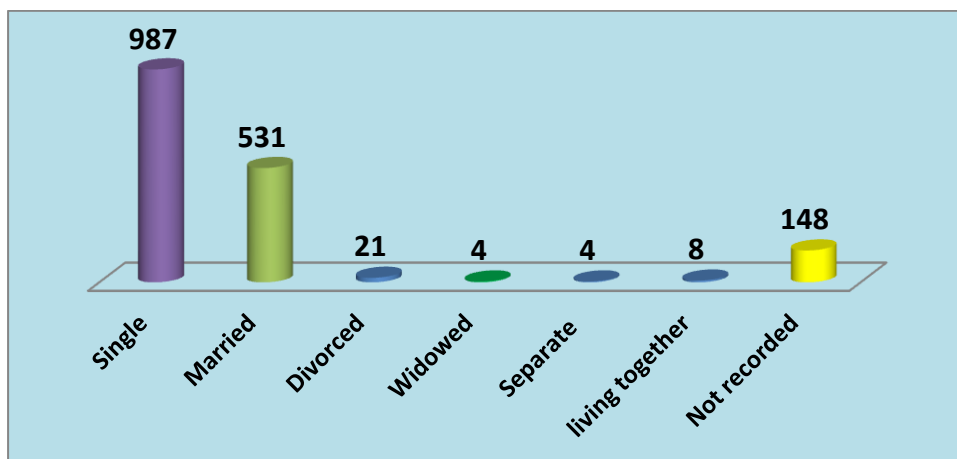


Source: DAMS Treatment Data: 2021, NDDCB

## Treatment Admissions by Marital Status

Treatment received persons were further classified based on their marital status and it shows that 58% (987) were single and 31% (531) were married. In addition divorced (21), Separated (04) and living together (08) persons were also reported.

**Graph No: 07 - Treatment Admissions by Marital Status**

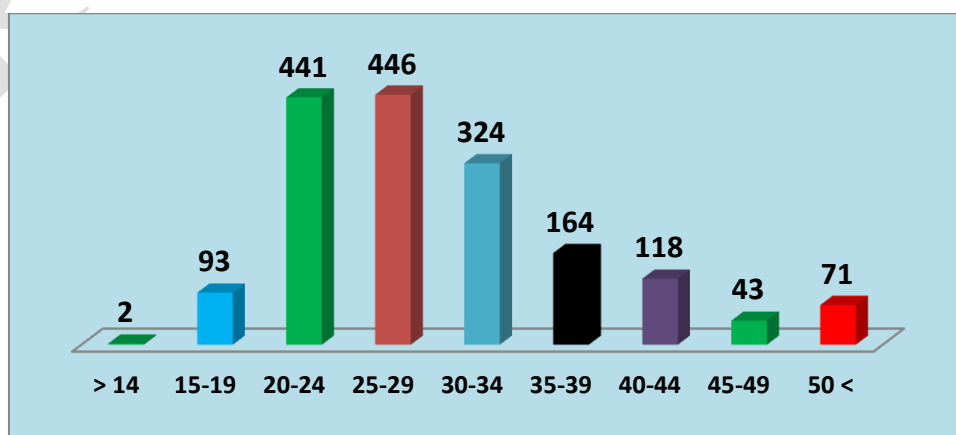


Source: DAMS Treatment Data: 2021, NDDCB

## Treatment Admissions by Age

Substance abuse is an increasing global socio – medical problem among young/ adolescent males. The distribution of drug related treatment admissions by age is shown in figure 06 and it reveals that majority, 52 % (887), of the clients were in age 20-29 range similar findings have been shown by the previous study conducted by the National Dangerous Drugs Control Board. 19% (324), 10% (164) and 07% (118) were in the range of 30-34, 35-39 and 40-44 years accordingly. Nonetheless, Two persons had reported for age category of 01-14.

**Graph No: 08 - Treatment Admissions by Age**

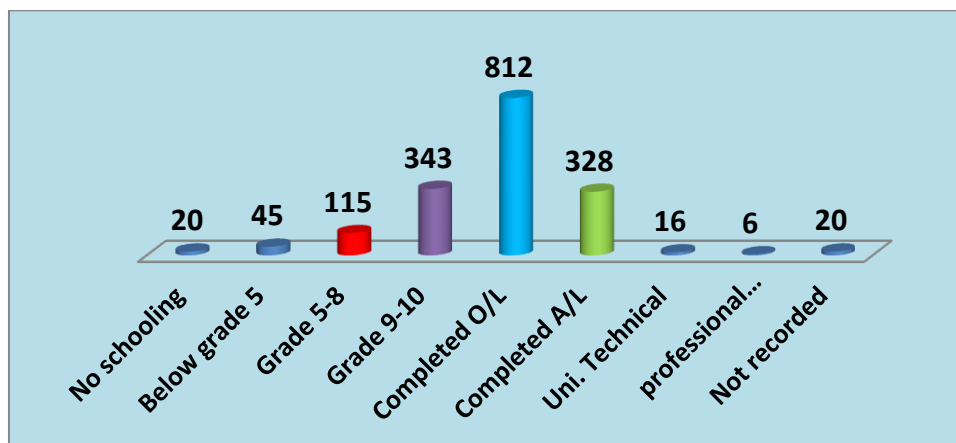


Source: DAMS Treatment Data: 2021, NDDCB

## Treatment Admissions by Educational Status

Educational background of treatment persons implies that, 30% (503) of them had lower level of (up to grade 10) education and 01% (20) of the persons have never been to school. However, 48% (812) had completed O/L, 19% (328) completed A/L exam and university or technically educated 16 persons.

**Graph No: 09 - Treatment Admissions by Educational Status**

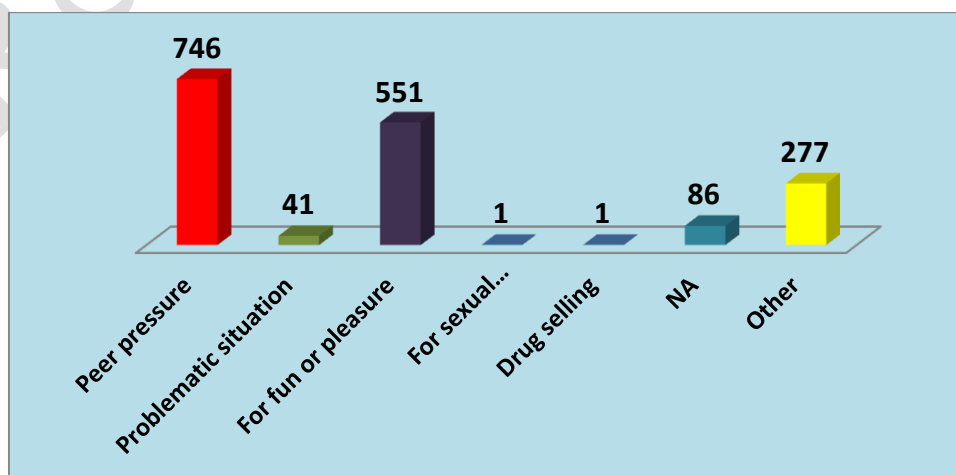


Source: DAMS Treatment Data: 2021, NDDCB

## Influencing factors for drug initiation

Research currently suggests a Considerable number of factors that may contribute to the initiation of drug use. SUD persons who are reported to the treatment services have related them factors which effected to the their Drug initiation. Majority (746) had initiated drug use due to peer pressure. In addition to that 551 persons were recorded for pleasure and entertainment and 41 persons were initiate drug use due to problematic situations.

**Graph No: 10 - Influencing factors for drug initiation**



Source: DAMS Treatment Data: 2021, NDDCB