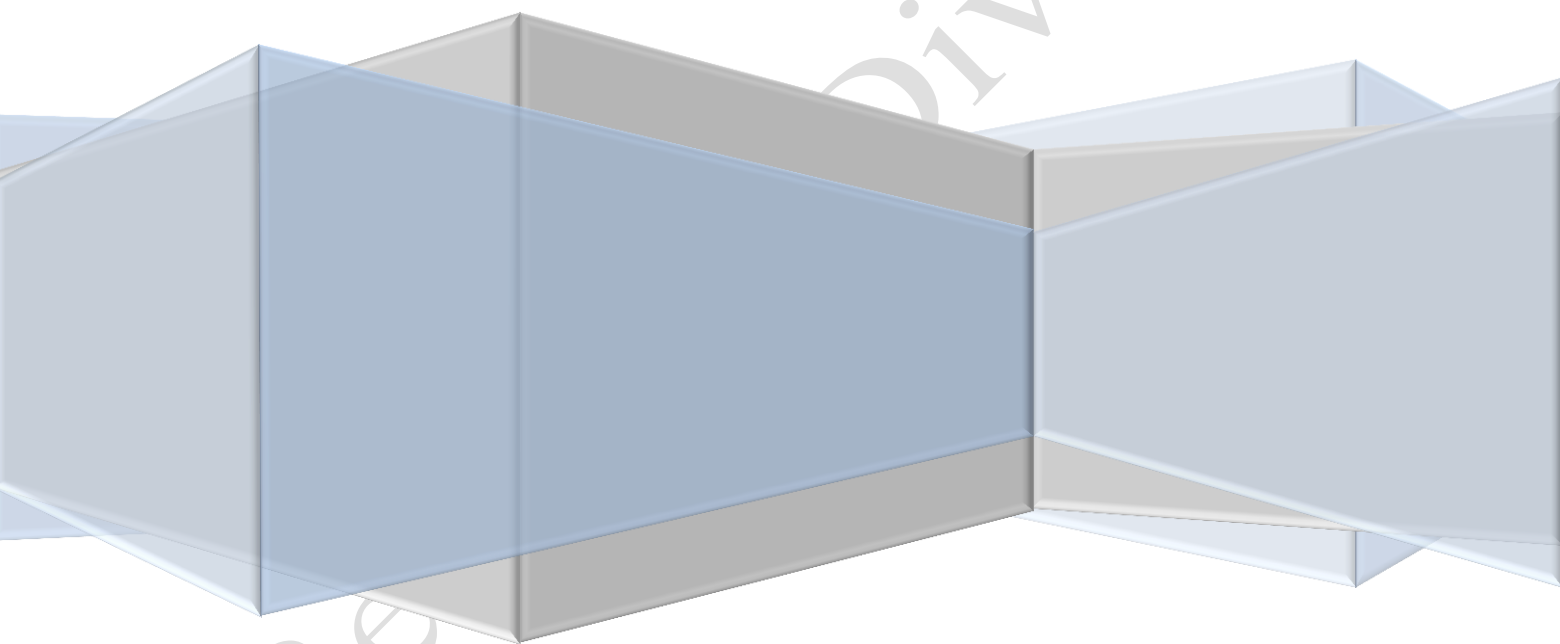


Drug Related Statistics (Arrests & Treatment)

January - December 2022



***Research Division
National Dangerous Drugs Control Board***

Introduction

The main objective of this report is to provide current updates on drug-related arrests and treatment admissions for drug use disorders to identify the current trends in drug abuse.

Specific Objectives are as follows,

1. To determine the incidence, prevalence, and characteristics of drug users.
2. To monitor the trends and patterns in drug use and drug-related arrests.

The Research Division gratefully acknowledges the generous contributions of the following

Mr. Shakya Nanayakkara, Chairman, NDDCB for the leadership and guidance,

Director, Police Narcotic Bureau and IT Division of the Police Narcotic Bureau for providing annual arrests statistics,

Government and non-governmental treatment providers

and Staff of the Research Division for their technical support.

Drug-Related Arrests

Drug Related Arrests by Drug

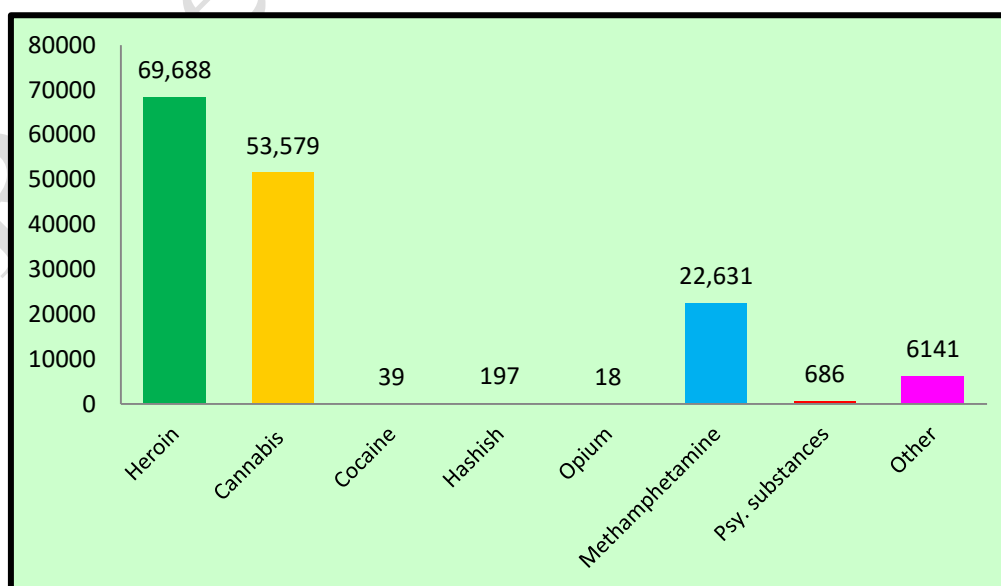
The total number of persons arrested for drug-related offenses is 152,979 persons in 2022. Of the total drug-related arrests, 69,688 (45.6%) offenders were for Heroin, 53,579 (35.0%) for Cannabis, 22,631 persons for Methamphetamine, 39 persons for cocaine, and 40 persons for hashish were arrested from January to December 2022.

Table 1- Drug-related Arrests by Drugs

Type of drugs	Frequency	%
Heroin	69,688	45.6
Cannabis	53,579	35.0
Cocaine	39	0.0
Hashish	197	0.1
Opium	18	0.1
Methamphetamine	22,631	14.8
Psychotropic substances	686	0.4
Other drugs	6141	4.0
Total	152,979	100.0

Source: Police Narcotics Bureau, 2022

Graph No: 01 –Drug-Related Arrest by Drugs



Source: Police Narcotics Bureau, 2022

Drug-Related Arrests by Districts

District	Heroin	%	Cannabis	%	cocaine	%	hashish	%	Methamphetamine	%	Psychotropic Substances	%	Opium	%	Others	%	Total	%
Ampara	490	32.8	869	58.2	0	0.0	1	0.1	76	5.1	12	0.8	0	0.0	44	3.0	1492	100.0
Anuradapura	2596	61.0	1442	33.9	0	0.0	0	0.0	131	3.0	54	1.3	0	0.0	35	0.8	4258	100.0
Badulla	435	27.4	1004	63.2	0	0.0	3	0.2	69	4.3	19	1.2	0	0.0	58	3.7	1588	100.0
Batticaloa	303	30.2	366	36.5	0	0.0	2	0.2	160	15.9	6	0.6	0	0.0	167	16.6	1004	100.0
Colombo	29141	46.2	16383	26.0	7	0.1	86	0.1	14548	23.1	65	0.1	0	0.0	2779	4.4	63009	100.0
Galle	2423	50.0	2037	42.0	5	0.1	5	0.1	277	5.7	1	0.0	0	0.0	105	2.1	4853	100.0
Gampaha	11175	58.7	4560	23.9	3	0.0	4	0.1	3137	16.5	85	0.4	0	0.0	81	0.4	19045	100.0
Hambantota	1415	37.8	2038	54.5	0	0.0	0	0.0	171	4.6	10	2.9	4	0.1	107	0.1	3745	100.0
Jaffna	1084	65.5	426	25.8	0	0.0	0	0.0	42	2.5	54	3.3	0	0.0	48	2.9	1654	100.0
Kalutara	3594	53.8	2112	31.6	0	0.0	1	0.0	601	9.0	85	1.3	2	0.0	286	4.3	6681	100.0
Kandy	2132	40.3	2678	50.6	0	0.0	54	1.0	204	3.9	38	0.7	7	0.1	177	3.4	5290	100.0
Kegalle	1253	49.1	1041	40.8	1	0.0	0	0.0	150	5.9	54	2.1	0	0.0	53	2.1	2552	100.0
Kurunegala	4267	46.0	4627	49.8	0	0.0	1	0.1	218	2.3	16	0.1	0	0.0	153	1.6	9283	100.0
Mannar	107	23.8	193	43.0	6	1.4	1	0.2	109	24.3	14	3.1	0	0.0	19	4.2	449	100.0
Matale	933	32.7	1606	55.2	0	0.0	1	0.0	168	5.7	0	0.0	0	0.0	201	6.9	2909	100.0

Matara	1527	41.4	1661	45.0	6	0.2	13	0.4	227	6.2	7	0.2	3	1.0	243	6.0	3687	100.0
Moneragala	214	11.9	1453	80.5	0	0.0	0	0.0	69	3.8	0	0.0	0	0.0	68	3.8	1804	100.0
Mullativu	66	21.9	213	70.8	0	0.0	0	0.0	19	6.3	2	0.7	0	0.0	1	0.3	301	100.0
Nuwara Eliya	136	6.3	1317	61.2	0	0.0	9	0.5	44	2.0	66	3.1	0	0.0	579	26.9	2151	100.0
Polonnaruwa	769	35.6	1216	56.2	0	0.0	1	0.1	144	6.7	3	0.1	1	0.1	28	1.3	2162	100.0
Puttalam	2161	40.4	1633	30.5	0	0.0	0	0.0	729	13.6	1	0.0	0	0.0	829	15.5	5353	100.0
Ratnapura	1186	38.0	1677	53.7	0	0.0	0	0.0	237	7.6	7	0.2	0	0.0	14	0.5	3121	100.0
Trincomalee	594	26.4	1325	58.8	1	0.0	0	0.0	248	11.0	53	2.3	0	0.0	33	1.5	2254	100.0
Vavuniya	188	23.7	556	70.2	0	0.0	0	0.0	28	3.5	2	0.3	0	0.0	18	2.3	792	100.0
Kilinochchi	57	17.8	245	76.6	0	0.0	0	0.0	17	5.3	1	0.3	0	0.0	0	0.0	320	100.0

Source: Police Narcotics Bureau, 2022

Table 3 – Drug-Related Arrest by Provinces

Province	Heroin	Cannabis	Methamphetamine	Others (Hashish, Opium, Cocaine, Psychotropic Substances and others)	Total
North Central	3365	2658	275	122	6420
Western	43,910	23,955	18,286	3484	89,635
Southern	5365	5736	675	509	12,285
Central	3201	5601	416	1132	10,350
Northern	1502	1633	215	166	3516
Eastern	1387	2560	484	317	4748
Sabaragamuwa	2439	2718	387	129	5673
North Western	6428	6260	947	1001	14,636
Uva	649	2457	138	217	3461

Source: Police Narcotics Bureau, 2022

***Other drugs - Babul, Madanamodaka, Hans, Panpara**

Seized Quantity of Drugs (Kg)

The total quantity of heroin seized Island-wide was 1677.102 kg and quantity of the cannabis seized Island-wide was 17,607.422 kg. In addition, 283.873 kg of Methamphetamine was seized in January to December 2022.

Table 4 - Seized Quantity of Drug (Kg)

Drug	Seized quantity (kg)
Heroin	1677.102
Cannabis	17,607.422
Cocaine	368.978
Hashish	3.531
Opium	10.809
Methamphetamine	283.873
Psychotropic substances	0.141
Other	82.820

Source: Police Narcotics Bureau, 2022

Treatment Admissions for drug use disorders

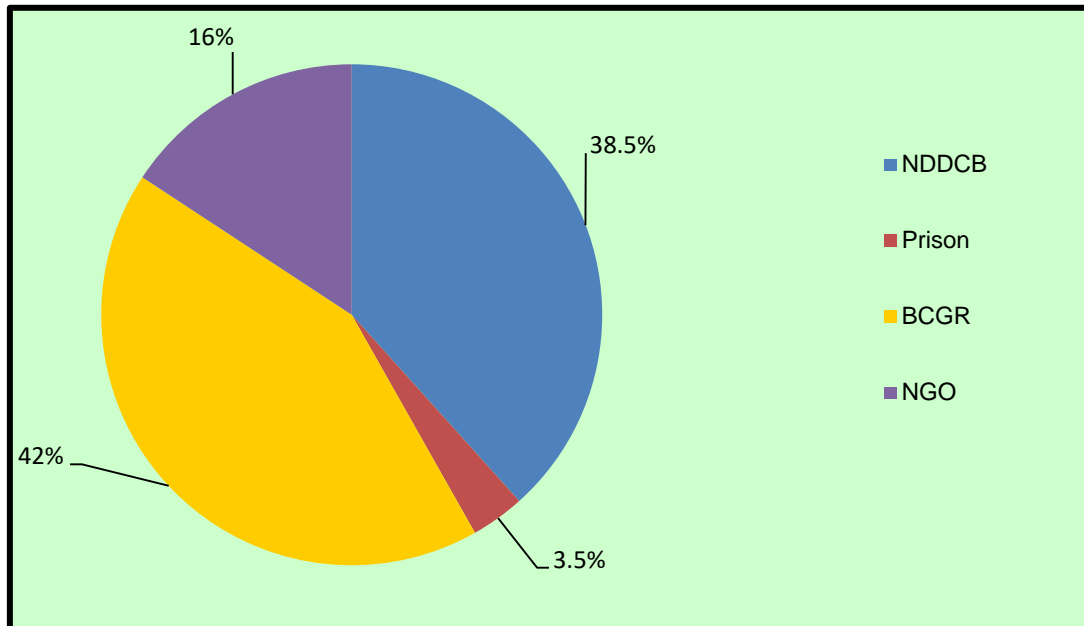
The government and non-government organizations were involved in drug treatment services in Sri Lanka. The reported number of persons who received treatment for drug dependence on Island-wide was 1930 from January to December 2022. Among them, 740 (38.5%) were reported from the National Dangerous Drugs Control Board treatment centers and 67 (3.5%) from the Prisoner Drug Rehabilitation Programme of the Department of Prisons. 304 (16%) were reported from NGOs or private treatment facilities. 819 (42%) were reported from the Kandakadu treatment and rehabilitation center of the Bureau of the Commissioner General of Rehabilitation.

Table 05 - Reported Drug Users by Treatment Facility for 2022

Facility	Government	NGO	Prisons	Kandakadu	Total
Number of treatment received persons	740	304	67	819	1930
Percentage %	38.5%	16%	3.5%	42%	100.0

Source: Drug Abuse Monitoring System, NDDCB:2022

Graph No: 04 - Reported Drug Users by Treatment Facility

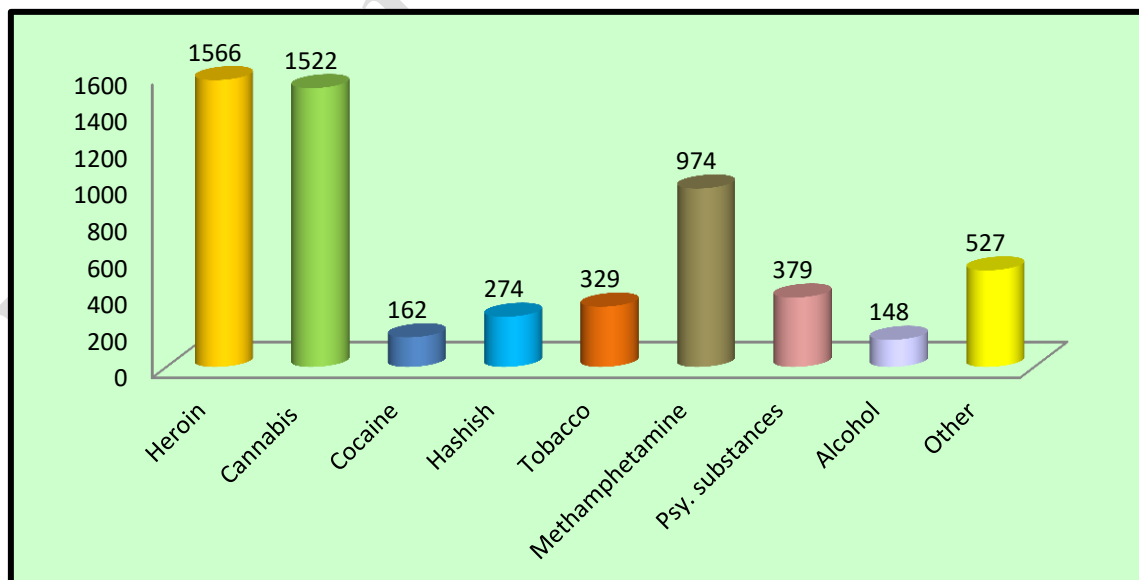


Source: Drug Abuse Monitoring System, NDDCB:2022

Treatment Admissions by Drug

Data indicates that most of the treatment received clients were multiple drug users. 154 used tobacco, 1,193 used heroin, and 278 used cannabis. Alcohol, tablets, and opium users are 94, 106, and 7.

Graph No: 05 - Treatment Admissions by Drug

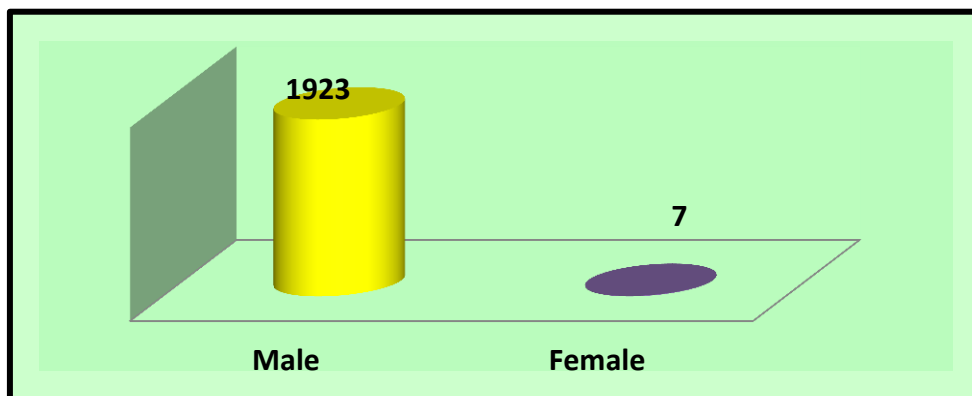


Source: Drug Abuse Monitoring System, NDDCB:2022

Treatment Admissions by Gender

Out of the total treatment admissions of the year 2022, 99.7% (1,923) were males and 07 (0.3%) were females.

Graph No: 06 - Treatment Admissions by Gender

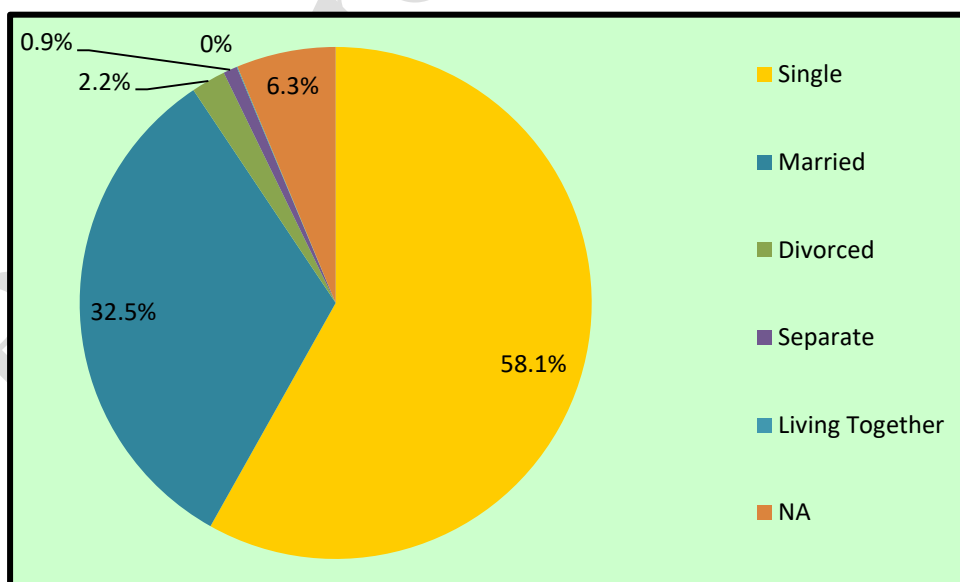


Source: Drug Abuse Monitoring System, NDDCB:2022

Treatment Admissions by Marital Status

Treatment received persons were further classified based on their marital status and it shows that 58.1% (1122) were single and 32.5% (627) were married. In addition, divorced (42), Separated (17), and living together (01) persons were also reported.

Graph No: 07 - Treatment Admissions by Marital Status

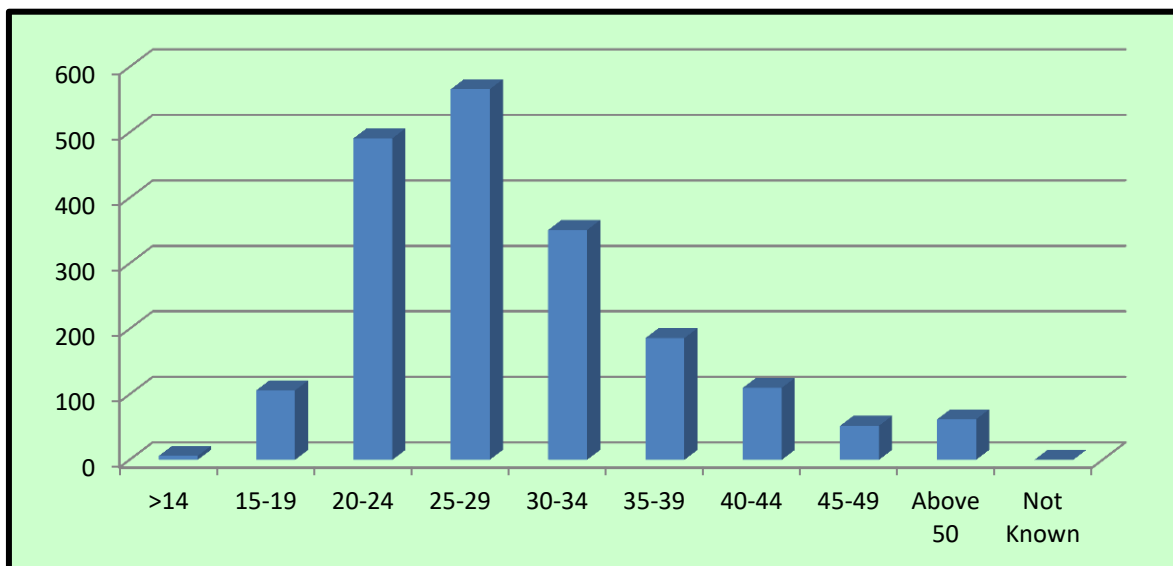


Source: DAMS Treatment Data: 2022, NDDCB

Treatment Admissions by Age

Substance abuse is an increasing global socio – medical problem among young/ adolescent males. The distribution of drug related treatment admissions by age is shown in Graph No: 08. 18.2% (351), 9.6% (186) and 5.7% (110) were in the range of 30-34, 35-39 and 40-44 years accordingly. Nonetheless, 06 persons had reported for age category of 01-14.

Graph No: 08 - Treatment Admissions by Age

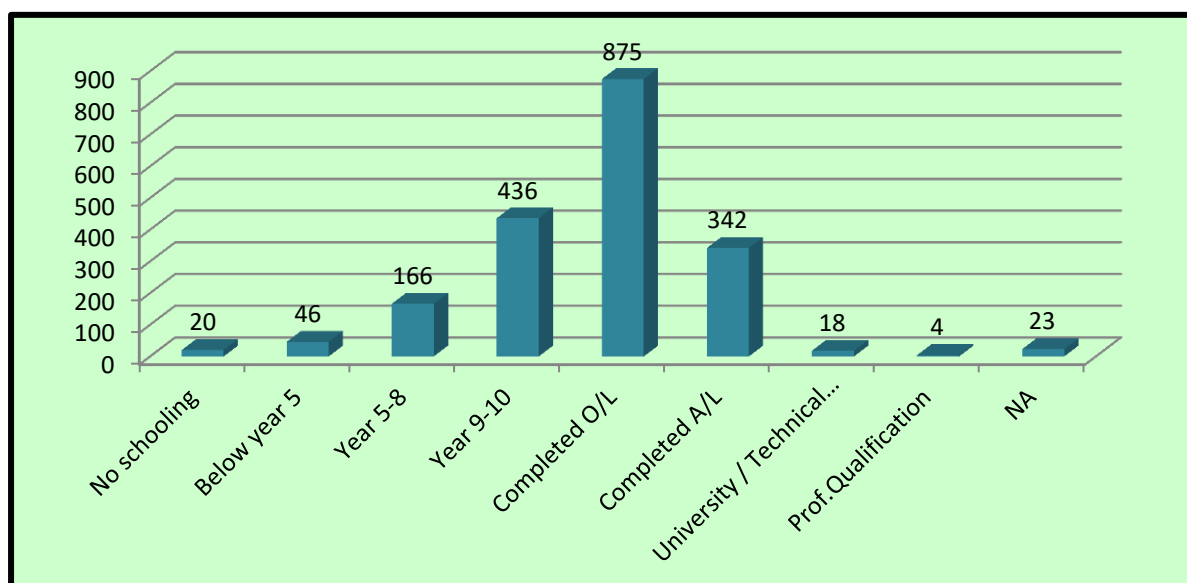


Source: DAMS Treatment Data: 2022, NDDCB

Treatment Admissions by Educational levels

Educational background of persons who admitted to the treatment services implies that, 33.6% (648) of them had lower level of (up to grade 10) education and 1.0% (20) of the persons have never been to school. However, 45.3% (875) had completed O/L, 17.7% (342) completed A/L exam and university or technically educated 22 persons.

Graph No: 07 - Treatment Admissions by Educational Status



Source: DAMS Treatment Data: 2022, NDDCB