

Prison Admissions

14. Prison Admissions by Sex and Offence

Table 58 - Male Prison Admissions by Offence

Type of Offence	2005		2006		2007		2008		2009	
	N	%	N	%	N	%	N	%	N	%
Narcotic	13291	41.3	10214	36.8	11319	37.4	10916	33.5	N/A	N/A
Excise	7979	24.8	6198	22.3	7504	24.8	8172	25.1	N/A	N/A
Theft	1280	4.0	1171	4.2	1121	3.7	1144	3.5	N/A	N/A
Murder	261	0.8	284	1.0	318	1.0	121	0.4	N/A	N/A
Unlawful Intercourse	13	0.0	22	0.1	13	0.0	14	0.0	N/A	N/A
Culpable Homicide		0.0		0.0		0.0	457	1.4	N/A	N/A
Other	9334	29.0	9866	35.5	10017	33.1	11734	36.0	N/A	N/A
Total	32158	100.0	27755	100.0	30292	100.0	32558	100.0	N/A	N/A

Table 59 - Female Prison Admissions by Offence

Type of Offence	2005		2006		2007		2008		2009	
	N	%	N	%	N	%	N	%	N	%
Narcotic	144	16.4	170	17.4	159	15.7	149	14.8	N/A	N/A
Excise	394	45.0	321	32.9	361	35.6	396	39.3	N/A	N/A
Theft	40	4.6	46	4.7	70	6.9	72	7.1	N/A	N/A
Murder	3	0.3	0	0.0	3	0.3	3	0.3	N/A	N/A
Unlawful Intercourse	8	0.9	9	0.9	11	1.1	51	5.1	N/A	N/A
Culpable Homicide		0.0		0.0		0.0	5	0.0	N/A	N/A
Other	287	32.8	431	44.1	410	40.4	332	32.9	N/A	N/A
Total	876	100.0	977	100.0	1014	100.0	1008	100.0	N/A	N/A

Table 60 - Total Prison Admissions by Offence

Type of Offence	2005		2006		2007		2008		2009	
	N	%	N	%	N	%	N	%	N	%
Narcotic	13435	40.7	10384	36.1	11478	36.7	11065	33.0	N/A	N/A
Excise	8373	25.3	6519	22.7	7865	25.1	8568	25.5	N/A	N/A
Theft	1320	4.0	1217	4.2	1191	3.8	1216	3.6	N/A	N/A
Murder	264	0.8	284	1.0	321	1.0	124	0.4	N/A	N/A
Unlawful Intercourse	21	0.1	31	0.1	24	0.1	65	0.2	N/A	N/A
Culpable Homicide		0.0		0.0		0.0	462	1.4	N/A	N/A
Other	9621	29.1	10297	35.8	10427	33.3	12066	35.9	N/A	N/A
Total	33034	100.0	28732	100.0	31306	100.0	33566	100.0	N/A	N/A

Table 61 - Distribution of Prison Admissions by Drug

Drug	2005		2006		2007		2008		2009	
	N	%	N	%	N	%	N	%	N	%
Cannabis	4565	34.0	3952	38.1	5065	44.1	5035	45.5	6300	47.3
Heroin	8861	66.0	6423	61.9	6386	55.6	6006	54.3	7003	52.6
Opium	9	0.1	9	0.1	25	0.2	24	0.2	10	0.1
Other	0	0.0	0	0.0	2	0.0	0	0.0	6	0.0
Total	13435	100.0	10384	100.0	11478	100.0	11065	100.0	13319	100.0

15. Drug Related Prison Admissions by Ethnicity and Religion

Table 62 - Distribution of Narcotic Drugs Related Prison Admissions by Ethnicity

Ethnicity	2005		2006		2007		2008		2009	
	N	%	N	%	N	%	N	%	N	%
Sinhalese	9519	91.7	7168	69.0	7781	67.8	7683	69.4	8887	66.7
Tamil (SL)	1662	16.0	1541	14.8	1688	14.7	1533	13.9	2057	15.4
Moor	2204	21.2	1586	15.3	1879	16.4	1767	16.0	2264	17.0
Malay	18	0.2	37	0.4	41	0.4	25	0.2	40	0.3
Burgher	30	0.3	47	0.5	75	0.7	50	0.5	66	0.5
Other	2	0.0	5	0.0	14	0.1	7	0.1	5	0.0
Total	#REF!	#REF!	10384	100.0	11478	100.0	11065	100.0	13319	100.0

Table 63 - Distribution of Narcotic Drugs Related Prison Admissions by Religion

Religion	2005		2006		2007		2008		2009	
	N	%	N	%	N	%	N	%	N	%
Buddhist	8692	64.7	6593	63.5	6859	59.8	6678	60.4	7982	59.9
Hindu	1444	10.7	1195	11.5	1296	11.3	1283	11.6	1609	12.1
Islam	2219	16.5	1617	15.6	1934	16.8	1800	16.3	2278	17.1
Roman Catholic	1048	7.8	533	5.1	942	8.2	1049	9.5	705	5.3
Christian	30	0.2	443	4.3	445	3.9	255	2.3	744	5.6
Other	2	0.0	3	0.0	2	0.0	0	0.0	1	0.0
Total	13435	100.0	10384	100.0	11478	100.0	11065	100.0	13319	100.0

Exhibit 7 - Drug Related Prison Admissions by Offence

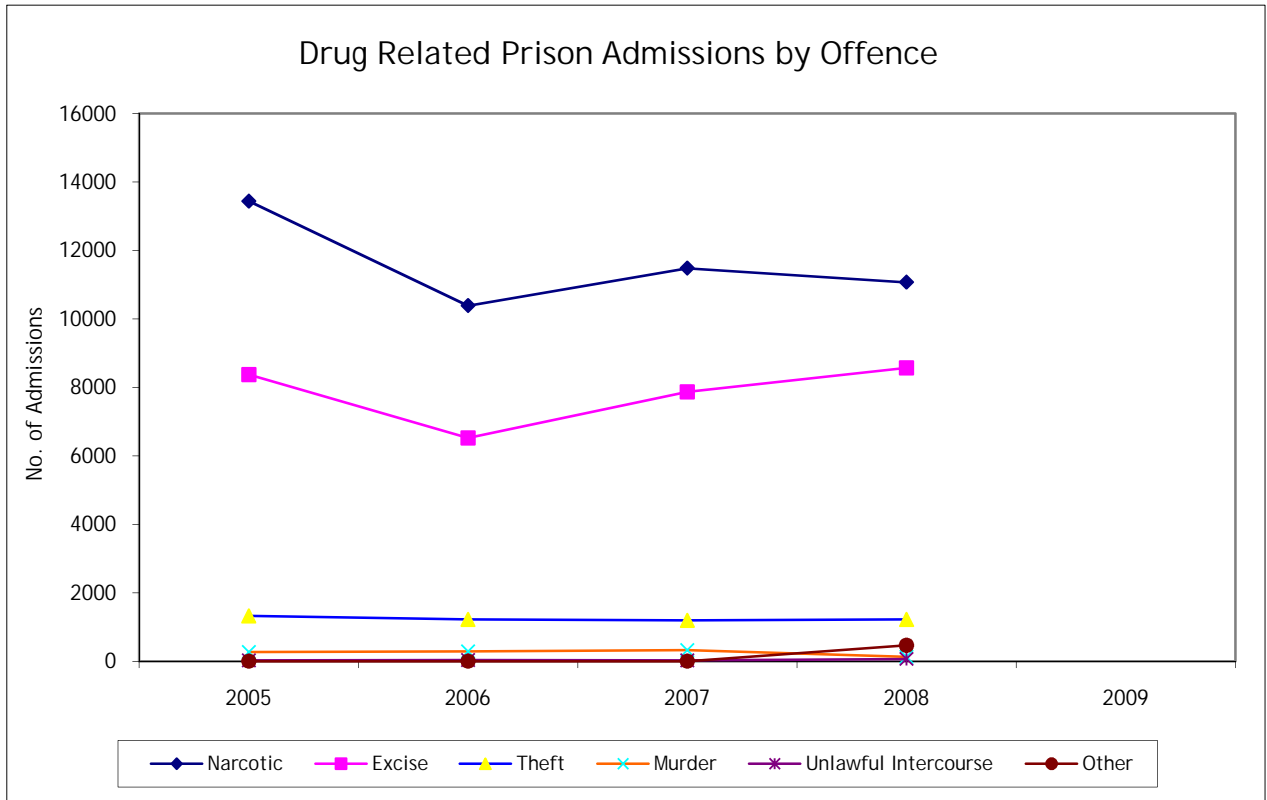


Exhibit 8 - Drug Related Prison Admissions by Drug

